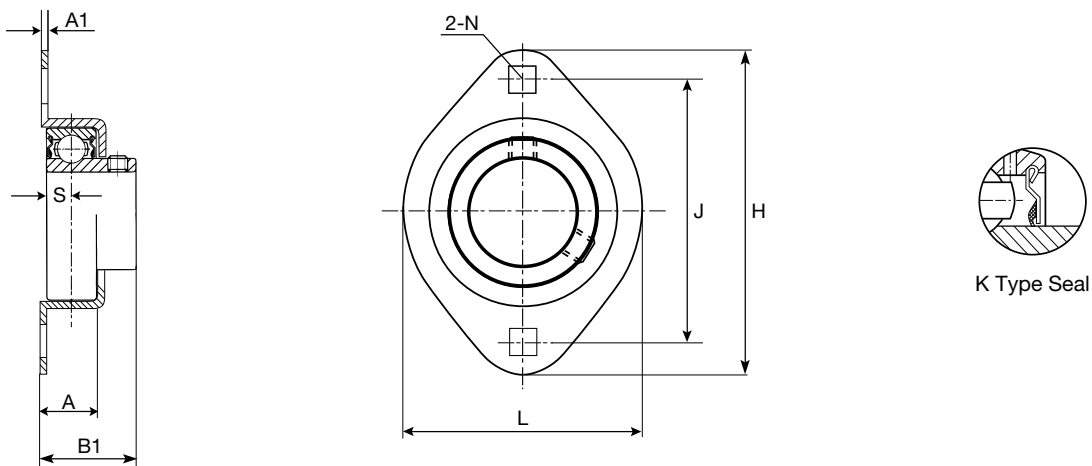


SBMST - 2-Piece Housing • Self-Aligning Unit

HLU Unit No.	Shaft Diameter		Dimensions (in./mm)								Bolt Used (in./mm)	Bearing No.	Housing No. (pair)	Weight lbs
	in.	mm	H	J	A	A1	N	L	B1	S				
SBMST201-08 SBMST202 SBMST202-10 SBMST203	1/2	15	3.2283 82	2.5000 63.5	0.5406 15	0.1772 4.5	0.2795 7.1	2.3622 60	0.8661 22	0.2362 6	1/4 M6	SB201-08 SB202 SB202-10 SB203	40MSTZP	.38
SBMST204-12 SBMST204	3/4	20	3.5827 91	2.8150 71.5	0.6693 17	0.1772 4.5	0.3543 9	2.6772 68	0.9842 25	0.2756 7	5/16 M8	SB204-12 SB204	47MSTZP	.50
SBMST205-14 SBMST205-15 SBMST205	7/8	25	3.7795 96	2.9921 76	0.7480 19	0.1772 4.5	0.3543 9	2.8346 72	1.0630 27	0.2953 7.5	5/16 M8	SB205-14 SB205-15 SB205	52MSTZP	.57
SBMST205-16	1													
SBMST206-17 SBMST206-18 SBMST206	1 1/16	30	4.4882 114	3.5630 90.5	0.7874 20	0.2165 5.5	0.4331 11	3.3465 85	1.1811 30	0.3150 8	3/8 M10	SB206-17 SB206-18 SB206	62MSTZP	.90
SBMST206-19 SBMST206-20	1 3/16 1 1/4													
SBMST207-20 SBMST207-21 SBMST207-22 SBMST207	1 1/4	35	5.0000 127	3.9370 100	0.9055 23	0.2165 5.5	0.4331 11	3.7402 95	1.2598 32	0.3346 8.5	3/8 M10	SB207-20 SB207-21 SB207-22 SB207	72MSTZP	1.32
SBMST207-23	1 7/16													



CSBCFM - 1-Piece Housing • Non Self-Aligning Unit • Flush Mount

HLU Unit No.	Shaft Diameter		Dimensions (in./mm)								Bolt Used (in./mm)	Bearing No.	Housing No.	Weight lbs
	in.	mm	H	J	A	A1	N	L	B1	S				
CSBCFM204-12 CSBCFM204	3/4	20	3.5433 90	2.8110 71.4	0.6063 15.4	0.0787 2.0	0.344 8.73	2.6260 66.7	1.0394 26.4	0.2756 7.0	5/16 8	CSB204-12 CSB204	47-CFM	.47