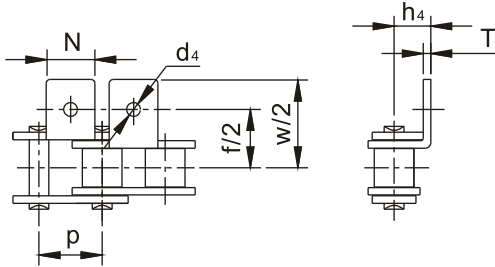




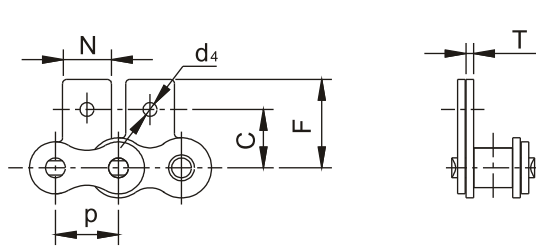
A-1

Bent, One Hole, One Side



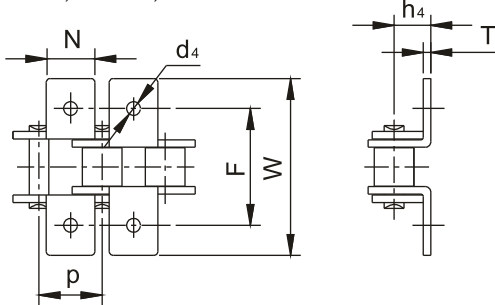
SA-1

Bent, One Hole, One Side



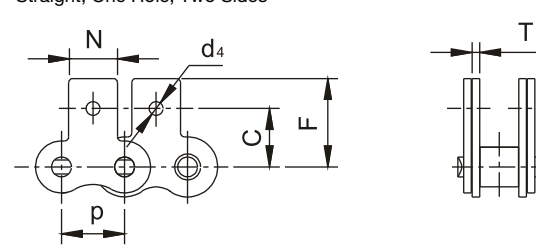
K-1

Bent, One Hole, Two Sides



SK-1

Straight, One Hole, Two Sides



HLU ANSI Chain No.	P	T	d4	f	W	h4	C	F	N
	in.	in.	in.	in.	in.	in.	in.	in.	in.
40	.5000	.0591	.1417	1.0000	1.3425	.3126	.5000	0.6811	.3740
50	.6250	.0811	.2126	1.2500	1.7520	.4055	.6260	0.8780	.5000
60	.7500	.0961	.2047	1.5000	2.1417	.4685	.7185	1.0354	.6260
80	1.0000	.1283	.2677	2.0000	2.7717	.6260	.9685	1.3465	.7520
100	1.2500	.1575	.3425	2.5000	3.5197	.7815	1.2500	1.7559	1.0000
120	1.5000	.1890	.4055	3.0000	4.1339	.9055	1.4390	2.0039	1.1260
140	1.7500	.2205	.4488	3.5000	4.8425	1.1260	1.7520	2.4409	1.3740
160	2.0000	.2520	.5157	4.0000	5.6220	1.2520	2.0000	2.3563	1.5000