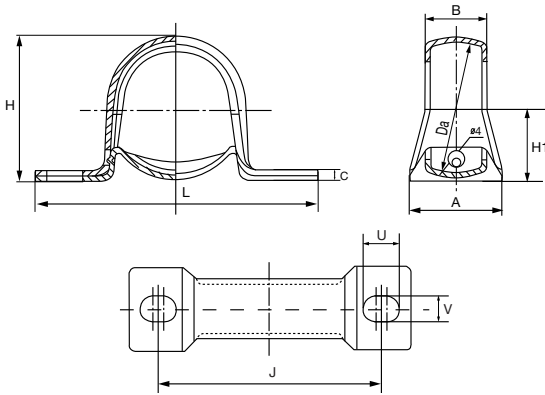


Hi-Light USA Stamped Steel Flanges are made from CRS1010 steel and then zinc plated to a bright finish. We then package and label them for easy identification. These stampings are typically used with spherical outer ring bearings such as the SB and SA inserts and Agricultural Disc Harrow Bearings.

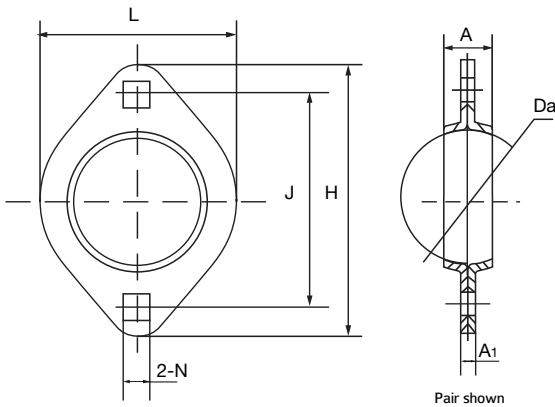
## PBST PILLOW BLOCK FLANGES - Snap Together Type • Non-relube



HLU Stamping No.	Dimensions (in./mm)										Weight lbs
	Da	L	J±0.4	H	H1±0.25	A	B	C	U±0.3	V±0.3	
40PBST	1.5748 40	3.4252 87	2.6772 68	1.7244 43.8	0.8740 22.2	0.9843 25	0.7244 18.4	0.1260 3.2	0.5000 12.7	0.3543 9	.13
47PBST	1.8504 47	3.8976 99	2.9921 76	1.9882 50.5	1.0000 25.4	1.2598 32	0.8780 22.3	0.1260 3.2	0.5000 12.7	0.4055 10.3	.21
52PBST	2.0472 52	4.2913 109	3.3858 86	2.2283 56.6	1.1260 28.6	1.2598 32	0.9252 23.5	0.1575 4	0.5630 14.3	0.4055 10.3	.28
62PBST	2.4409 62	4.6850 119	3.7402 95	2.6024 66.1	1.3110 33.3	1.4961 38	1.0433 26.5	0.1575 4	0.5630 14.3	0.4055 10.3	.37
72PBST	2.8346 72	5.1181 130	4.1732 106	3.0709 78	1.5630 39.7	1.6535 42	1.1024 28	0.1811 4.6	0.7520 19.1	0.5315 13.5	.55

Each piece consists of a top and bottom that snaps together to hold the bearing in place.

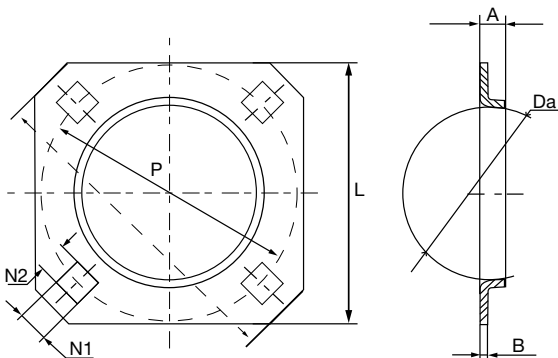
## MSTZP 2 BOLT FLANGES - Non-relube



HLU Stamping No.	Dimensions (in./mm)							Weight lbs
	Da	L	J±0.4	H	A	A1	N	
40MSTZP	1.5748 40	2.3622 60	2.5 63.5	3.2283 82	0.5906 15	0.1772 4.5	0.2795 7.1	.09
47MSTZP	1.8504 47	2.6772 68	2.8150 71.5	3.5827 91	0.6693 17	0.1772 4.5	0.3543 9	.10
52MSTZP	2.0472 52	2.8346 72	2.9921 76	3.7795 96	0.7480 19	0.1772 4.5	0.3543 9	.11
62MSTZP	2.4409 62	3.3465 85	3.5630 90.5	4.4882 114	0.7874 20	0.2165 5.5	0.4330 11	.18
72MSTZP	2.8346 72	3.7402 95	3.9370 100	5 127	0.9055 23	0.2165 5.5	0.4330 11	.21

Sold per each. Two pieces required per bearing.

## MSZP-SQ 4-BOLT SQUARE FLANGES - Non-relube



HLU Stamping No.	Dimensions (in./mm)							Weight lbs
	Da	L	P	A	B	N1	N2	
80MSZP-SQ	3.1496 80	4.7480 120.6	4.6874 119.06	0.5827 14.8	0.1378 3.5	0.5197 13.2	0.5433 13.8	.62
87MSZP-SQ	3.4374 87.31	4.7244 120	4.7500 120.65	0.6563 16.67	0.1378 3.5	0.5315 13.5	0.5787 14.7	.61

Sold per each. Two pieces required per bearing.