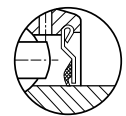
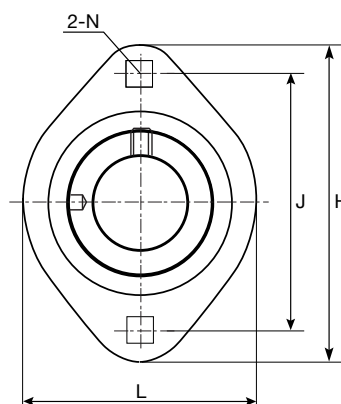
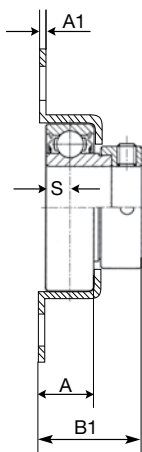


K Type Seal

SAMST - 2-Piece Housing • Self-Aligning Unit

HLU Unit No.	Shaft Diameter		Dimensions (in./mm)								Bolt Used (in./mm)	Bearing No.	Housing No. (pair)	Weight lbs
	in.	mm	H	J	A	A1	N	L	B1	S				
SAMST201-08 SAMST202 SAMST202-10 SAMST203	1/2	15	3.2283 82	2.5000 63.5	0.5906 15	0.1772 4.5	0.2795 7.1	2.3622 60	1.1260 28.6	0.2559 6.5	1/4 M6	SA201-08 SA202 SA202-10 SA203	40MSTZP	.48
SAMST204-12 SAMST204	3/4	20	3.5827 91	2.8150 71.5	0.6693 17	0.1772 4.5	0.3543 9	2.6772 68	1.2205 31	0.2953 7.5	5/16 M8	SA204-12 SA204	47MSTZP	.60
SAMST205-14 SAMST205-15 SAMST205 SAMST205-16	7/8 1 1/16	25	3.7795 96	2.9921 76	0.7480 19	0.1772 4.5	0.3543 9	2.8346 72	1.2205 31	0.2953 7.5	5/16 M8	SA205-14 SA205-15 SA205 SA205-16	52MSTZP	.62
SAMST206-17 SAMST206-18 SAMST206 SAMST206-19 SAMST206-20	1 1/16 1 1/8	30	4.4882 114	3.5630 90.5	0.7874 20	0.2165 5.5	0.4331 11	3.3465 85	1.4055 35.7	0.3543 9	3/8 M10	SA206-17 SA206-18 SA206 SA206-19 SA206-20	62MSTZP	1.06
SAMST207-20 SAMST207-21 SAMST207-22 SAMST207 SAMST207-23	1 1/4 1 5/16 1 3/8	35	5.0000 127	3.9370 100	0.9055 23	0.2165 5.5	0.4331 11	3.7402 95	1.5315 38.9	0.3740 9.5	3/8 M10	SA207-20 SA207-21 SA207-22 SA207 SA207-23	72MSTZP	1.47



K Type Seal

CSACFM - 1-Piece Housing • Non Self-Aligning Unit • Flush Mount

HLU Unit No.	Shaft Diameter		Dimensions (in./mm)								Bolt Used (in./mm)	Bearing No.	Housing No.	Weight lbs
	in.	mm	H	J	A	A1	N	L	B1	S				
CSACFM204-12 CSACFM204	3/4	20	3.5433 90	2.8110 71.4	0.6063 15.4	0.0787 2.0	0.344 8.73	2.6260 66.7	1.2362 31.4	0.2756 7.0	5/16 8	CSA204-12* CSA204	47-CFM	.55

*CSA204-12 with 14mm outer ring width used