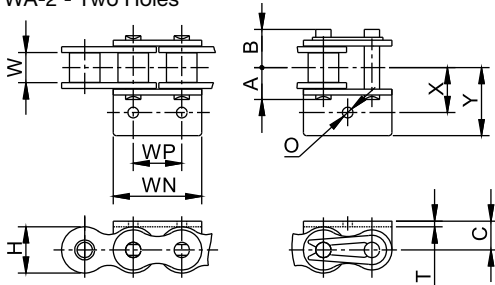


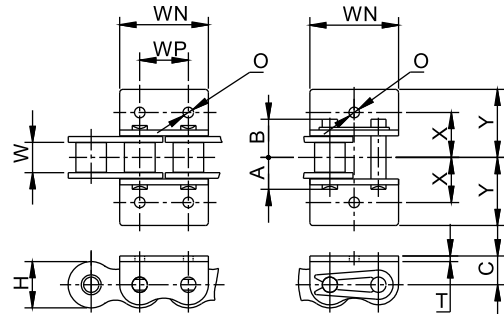
### Bent, One Side

WA-1 - One Hole  
WA-2 - Two Holes



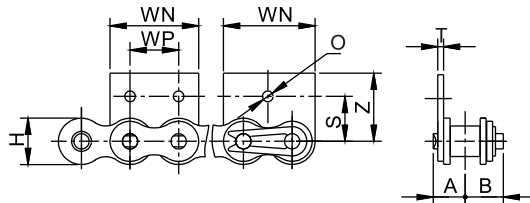
### Bent, Two Sides

WK-1 - One Hole  
WK-2 - Two Holes



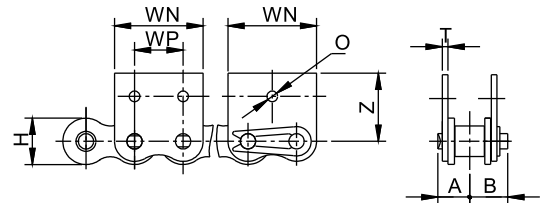
### Straight, One Side

WSA-1 - One Hole  
WSA-2 - Two Holes



### Straight, One Side

WSK-1 - One Hole  
WSK-2 - Two Holes



HLU ANSI Chain No.	Pitch	Width between Inner Plates	A of pin length	B of pin length	Plate Thickness	Inner plate Depth	Minimum Ultimate Tensile Strength
	P	b1 min	A max	B max	T	H max	lbs
	in.	in.	in.	in.	in.	in.	
35	.3750	.1843	.2421	.3209	.0512	.3425	1760
40	.5000	.3091	.3268	.3917	.0591	.4752	3125
50	.6250	.3701	.4035	.4795	.0811	.5941	4880
60	.7500	.4949	.5039	.5787	.0961	.7118	7030
C60H	.7500	.4949	.5748	.6496	.1283	.7118	7030
80	1.0000	.6201	.6476	.7067	.1283	.9500	12500
120	1.5000	.9929	1.0000	1.1063	.1890	1.4252	28125

HLU ANSI Chain No.	Dimension Chart							
	WN	WP	O	C	X	Y	S	Z
	in.	in.	in.	in.	in.	in.	in.	in.
35	.7142	-	.1339	-	-	-	.3740	.5433
40	.9606	.3740	.1772	.3110	.5000	.6850	.5000	.6811
*50	1.2008	.4685	.2165/.2598	.4055	.6260	.8772	-	-
60	1.4409	.5630	.2598	.4685	.7500	1.0709	-	-
C60H	1.4626	-	.3543	.5906	.8268	1.1417	-	-
80	1.9055	.7520	.3543	.6260	1.0000	1.3858	-	-
120	2.7236	-	.4055	.9055	1.5000	2.1969	-	-

\*Hole "O" diameter 0.2598 indicates only one hole.